

# **OUT ON THE SHELF**

info@outontheshelf.com

www.outontheshelf.com

Second Floor, 42 Carden St,  
Guelph, ON N1H 3A2

## **HOME IS WHERE THE HEART IS**

Out on the Shelf began in 1997 as a collection of donations kept in a basement in the University of Guelph's MacKinnon building. The library officially opened in 2005 when it was given a space on the second floor of the Canadian Mental Health Association (CMHA) building at 147 Wyndham St. Since then, it moved to the Matrix building, but was forced to move suddenly and place its collection in storage until its move to 10C at 42 Carden Street, where it is now situated.



Above: 157-145 Wyndham St, 1984. Photo accessed via Wellington County Museum and Archives.



Spaces occupied by  
the 2SLGBTQIA+  
community in  
Guelph-Wellington  
over the years



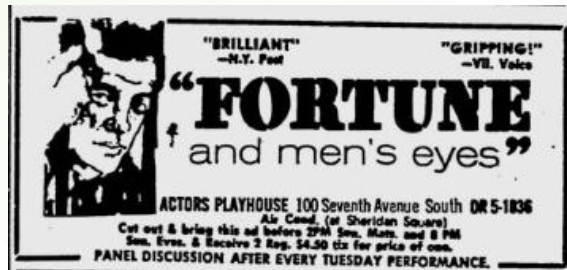
## COURAGE TO LOVE: GUELPH REFORMATORY

Guelph Correctional Centre (AKA Guelph Reformatory or Ontario Reformatory) was a detriment not only to 2SLGBTQIA+ people in Guelph-Wellington, but all across Ontario.

In 1915, the Toronto Central Prison closed. Inmates with sentences of two years or fewer were sent to Guelph Reformatory.



Until 1969, experiencing same-sex attraction was a criminal offense in Canada, and the accused were charged with “gross indecency.” The vague definition of “gross indecency” allowed for the legal persecution of men who were suspected of experiencing any form of same-sex attraction. In 1953, the language was changed to remove references made to “men,” extending the law to women.



*Fortune and Men's Eyes* (1971) was based off of John Herbert's brutal experiences at Guelph Reformatory as a homosexual.

## GATHERING WITH PRIDE

The Harcourt Memorial United Church has been the gathering place of the Rainbow Chorus of Waterloo-Wellington for over 20 years. In 2005 Harcourt became an Affirming Congregation, embracing and affirming people of all sexual orientations and gender identities. They were one of the first churches in the community to make this commitment to inclusivity and belonging.

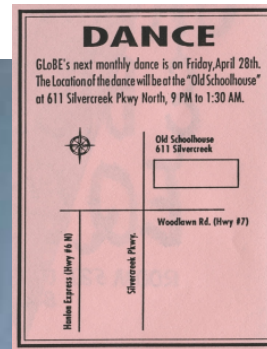


Above: Harcourt Memorial United Church, Dean Avenue, Guelph, 1977. Photo accessed via Wellington County Museum and Archives.



## THE OLD SCHOOLHOUSE

In May 1977, Guelph Gay Equality (formerly the University of Guelph Homophile Association, known today as Guelph Queer Equality) held their first dance at The Schoolhouse, 611 Silvercreek Parkway, Guelph. The Guelph Gay Equality Newsletter stated “Everyone enjoyed the intimate country atmosphere.” This would be the first of many monthly dances for the 2SLGBTQIA+ community for decades to come.



Above: The Old Stone Schoolhouse, 15 March 1974. Photo by Couling, Gordon. Photo accessed via Wellington County Museum and Archives.

Advertisement for a monthly dance at the old schoolhouse for Guelph Gay, Lesbian, and Bisexual Equality (GLOBE) held April 28<sup>th</sup>, 1994.